

Centre No.						Paper Reference							Surname	Initial(s)
Candidate No.						6	6	6	5	/	0	1	Signature	

Paper Reference(s)

6665/01

Edexcel GCE

Core Mathematics C3

Advanced Level

Monday 20 June 2005 – Morning

Time: 1 hour 30 minutes

Examiner's use only

--	--	--

Team Leader's use only

--	--	--

[illegible]

Instructions to Candidates

In the boxes above, write your centre number, candidate number, your surname, initial(s) and signature.

Check that you have the correct question paper.

You must write your answer for each question in the space following the question.

When a calculator is used, the answer should be given to an appropriate degree of accuracy.

Information for Candidates

A booklet ‘Mathematical Formulae and Statistical Tables’ is provided.

Full marks may be obtained for answers to ALL questions.

The marks for individual questions and the parts of questions are shown in round brackets: e.g. (2).

There are 7 questions in this question paper. The total mark for this paper is 75.

There are 20 pages in this question paper. Any blank pages are indicated.

Advice to Candidates

You must ensure that your answers to parts of questions are clearly labelled.

You must show sufficient working to make your methods clear to the Examiner. Answers without working may gain no credit.

This publication may be reproduced only in accordance with Edexcel Limited copyright policy.
©2005 Edexcel Limited.

Printer's Log. No.

Printer's Log. No.
N23494B

W850/R6665/57570 7/7/3/3/3



Turn over



Leave
blank

- (2)

- (6)



Leave
blank

Question 1 continued

Handwriting practice lines for Question 1 continued.

(Total 8 marks)

Q1

Mark box for Q1



Leave
blank

- (3)

- (3)

(6)



Leave
blank

$$f: x \rightarrow \frac{5x+1}{x^2+x-2} - \frac{3}{x+2}, \quad x > 1.$$

(a) Show that $f(x) = \frac{2}{x-1}$, $x > 1$. (4)

(b) Find $f^{-1}(x)$. (3)

$$g: x \rightarrow x^2 + 5, \quad x \in \mathbb{R}.$$

(c) Solve $\text{fg}(x) = \frac{1}{4}$.



4.

$$f(x) = 3e^x - \frac{1}{2}\ln x - 2, \quad x > 0.$$

- (a) Differentiate to find $f'(x)$.

(3)

The curve with equation $y = f(x)$ has a turning point at P . The x -coordinate of P is α .

- (b) Show that $\alpha = \frac{1}{6}e^{-\alpha}$.

(2)

The iterative formula

$$x_{n+1} = \frac{1}{6} e^{-x_n}, \quad x_0 = 1,$$

is used to find an approximate value for α .

- (c) Calculate the values of x_1 , x_2 , x_3 and x_4 , giving your answers to 4 decimal places.

(2)

- (d) By considering the change of sign of $f'(x)$ in a suitable interval, prove that $\alpha = 0.1443$ correct to 4 decimal places.

(2)



Q4

(Total 9 marks)



5. (a) Using the identity $\cos(A + B) \equiv \cos A \cos B - \sin A \sin B$, prove that

(b) Show that

(c) Express $4 \cos \theta + 6 \sin \theta$ in the form $R \sin(\theta + \alpha)$, where $R > 0$ and $0 < \alpha < \frac{1}{2}\pi$. (4)

(d) Hence, for $0 \leq \theta < \pi$, solve

$$2 \sin 2\theta = 3(\cos 2\theta + \sin \theta - 1),$$

giving your answers in radians to 3 significant figures, where appropriate. (5)

This image shows a single sheet of white paper with horizontal ruling lines. The lines are evenly spaced and run across the width of the page. There are no margins, text, or other markings on the paper.



Leave
blank

Question 5 continued



6.

Figure 1

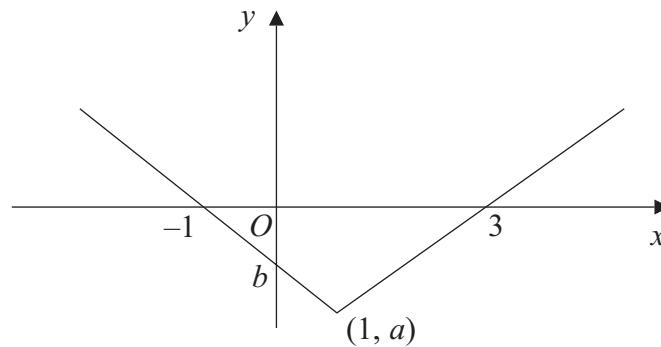


Figure 1 shows part of the graph of $y = f(x)$, $x \in \mathbb{R}$. The graph consists of two line segments that meet at the point $(1, a)$, $a < 0$. One line meets the x -axis at $(3, 0)$. The other line meets the x -axis at $(-1, 0)$ and the y -axis at $(0, b)$, $b < 0$.

In separate diagrams, sketch the graph with equation

(a) $y = f(x + 1)$, (2)

(b) $y = f(|x|)$. (3)

Indicate clearly on each sketch the coordinates of any points of intersection with the axes.

Given that $f(x) = |x - 1| - 2$, find

(c) the value of a and the value of b , (2)

(d) the value of x for which $f(x) = 5x$. (4)





7. A particular species of orchid is being studied. The population p at time t years after the study started is assumed to be

$$p = \frac{2800a e^{0.2t}}{1 + a e^{0.2t}}, \text{ where } a \text{ is a constant.}$$

(a) show that $a = 0.12$,

(3)

(b) use the equation with $a = 0.12$ to predict the number of years before the population of orchids reaches 1850.

(4)

(c) Show that $p = \frac{336}{0.12 + e^{-0.2t}}$.

(1)

(d) Hence show that the population cannot exceed 2800.

(2)





Leave
blank

Question 7 continued

Q7

(Total 10 marks)

TOTAL FOR PAPER: 75 MARKS

END

