

Leave blank

2. (a) Evaluate $81^{\frac{3}{2}}$

(2)

(b) Simplify fully $x^2 \left(4x^{-\frac{1}{2}} \right)^2$

(2)

(Total 4 marks)

Q2



P 4 3 1 4 6 A 0 3 3 2

3. A sequence a_1, a_2, a_3, \dots is defined by

$$a_{n+1} = 4a_n - 3, \quad n \geq 1$$

$$a_1 = k, \quad \text{where } k \text{ is a positive integer.}$$

(a) Write down an expression for a_2 in terms of k .

(1)

Given that $\sum_{r=1}^3 a_r = 66$

(b) find the value of k .

(4)

Horizontal lines for writing answers.



Leave
blank

Question 3 continued

Lined writing area for the answer to Question 3, consisting of 30 horizontal lines.

(Total 5 marks)

Q3



P 4 3 1 4 6 A 0 5 3 2

6.

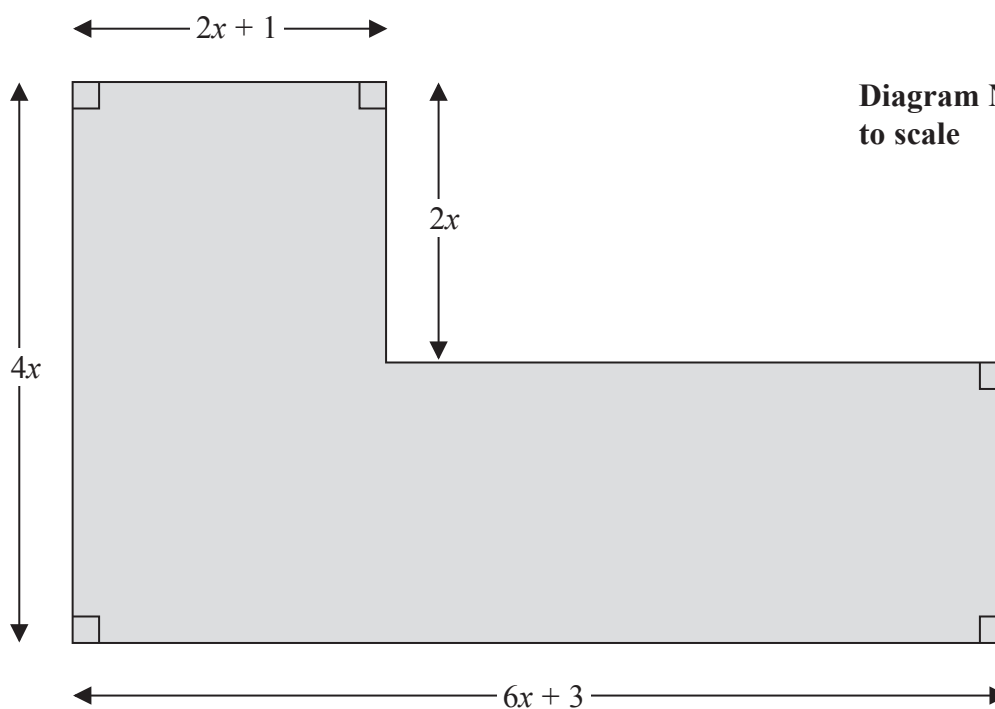


Diagram NOT to scale

Figure 1

Figure 1 shows the plan of a garden. The marked angles are right angles.

The six edges are straight lines.

The lengths shown in the diagram are given in metres.

Given that the perimeter of the garden is greater than 40 m,

(a) show that $x > 1.7$ (3)

Given that the area of the garden is less than 120 m^2 ,

(b) form and solve a quadratic inequality in x . (5)

(c) Hence state the range of the possible values of x . (1)



Leave blank

Question 6 continued

Lined writing area for the answer to Question 6.

(Total 9 marks)

Q6

Grading box for Question 6.



P 4 3 1 4 6 A 0 1 3 3 2

7.

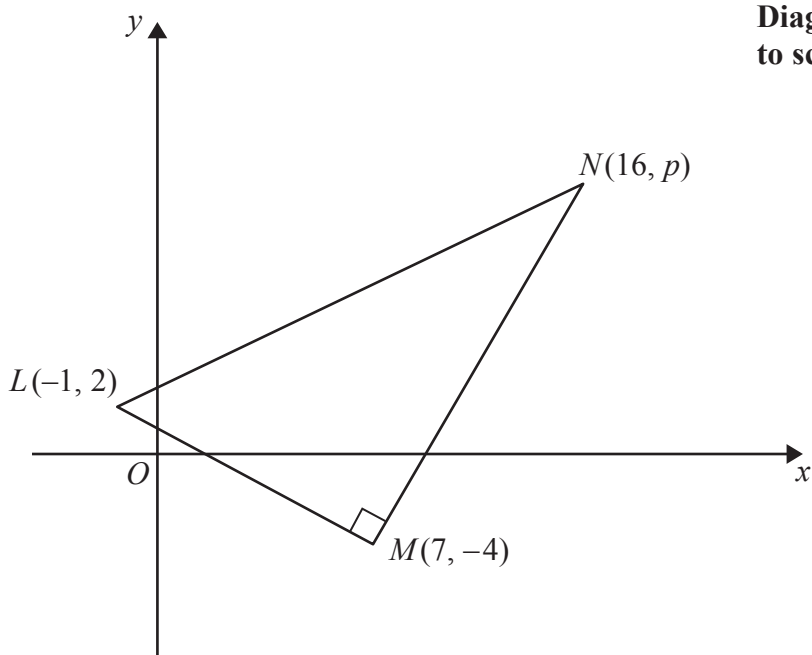


Figure 2

Figure 2 shows a right angled triangle LMN .

The points L and M have coordinates $(-1, 2)$ and $(7, -4)$ respectively.

(a) Find an equation for the straight line passing through the points L and M .

Give your answer in the form $ax + by + c = 0$, where a , b and c are integers.

(4)

Given that the coordinates of point N are $(16, p)$, where p is a constant, and angle $LMN = 90^\circ$,

(b) find the value of p .

(3)

Given that there is a point K such that the points L , M , N , and K form a rectangle,

(c) find the y coordinate of K .

(2)



Leave blank

8.
$$\frac{dy}{dx} = 6x^{-\frac{1}{2}} + x\sqrt{x}, \quad x > 0$$

Given that $y = 37$ at $x = 4$, find y in terms of x , giving each term in its simplest form.

(7)



Leave
blank

9. The curve C has equation $y = \frac{1}{3}x^2 + 8$

The line L has equation $y = 3x + k$, where k is a positive constant.

- (a) Sketch C and L on separate diagrams, showing the coordinates of the points at which C and L cut the axes.

(4)

Given that line L is a tangent to C ,

- (b) find the value of k .

(5)



Leave
blank

Question 9 continued



Leave blank

10. Xin has been given a 14 day training schedule by her coach.

Xin will run for A minutes on day 1, where A is a constant.

She will then increase her running time by $(d + 1)$ minutes each day, where d is a constant.

(a) Show that on day 14, Xin will run for

$$(A + 13d + 13) \text{ minutes.} \tag{2}$$

Yi has also been given a 14 day training schedule by her coach.

Yi will run for $(A - 13)$ minutes on day 1.

She will then increase her running time by $(2d - 1)$ minutes each day.

Given that Yi and Xin will run for the same length of time on day 14,

(b) find the value of d . (3)

Given that Xin runs for a total time of 784 minutes over the 14 days,

(c) find the value of A . (3)



Leave
blank

11.

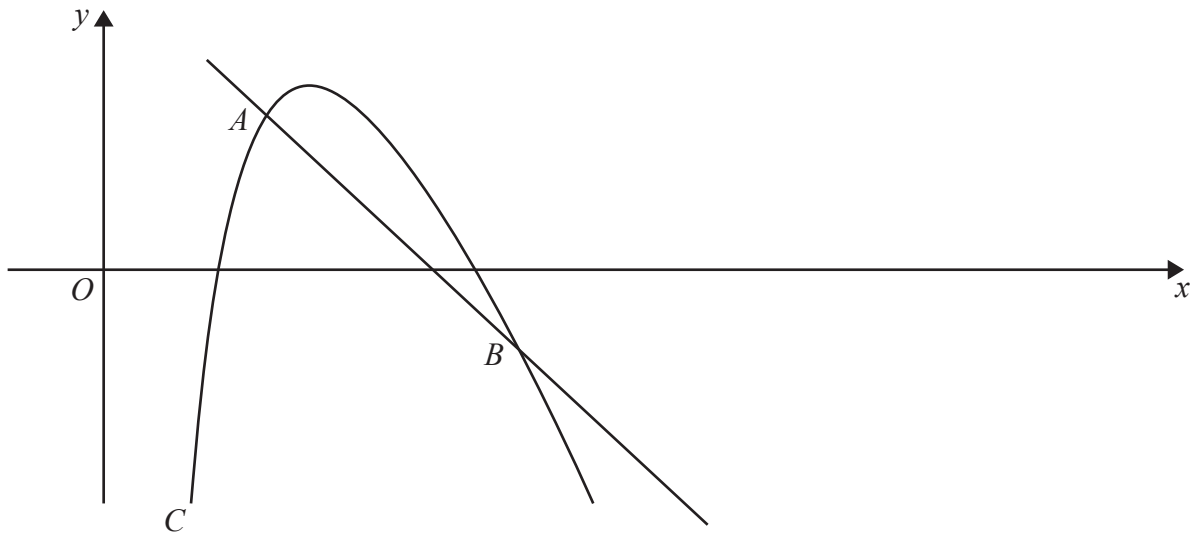


Figure 3

A sketch of part of the curve C with equation

$$y = 20 - 4x - \frac{18}{x}, \quad x > 0$$

is shown in Figure 3.

Point A lies on C and has an x coordinate equal to 2

- (a) Show that the equation of the normal to C at A is $y = -2x + 7$ (6)

The normal to C at A meets C again at the point B , as shown in Figure 3.

- (b) Use algebra to find the coordinates of B . (5)



Leave
blank

Question 11 continued

Lined area for writing the answer to Question 11.



Leave blank

Question 11 continued



Leave blank

Question 11 continued

Lined area for writing the answer to Question 11.

Q11

(Total 11 marks)

TOTAL FOR PAPER: 75 MARKS

END

