

Write your name here

Surname	Other names
---------	-------------

**Pearson  
Edexcel GCE**

Centre Number

--	--	--	--	--

Candidate Number

--	--	--	--

# Core Mathematics C4

## Advanced

Friday 24 June 2016 – Morning  
**Time: 1 hour 30 minutes**

Paper Reference  
**6666/01**

**You must have:**  
Mathematical Formulae and Statistical Tables (Pink)

Total Marks

**Candidates may use any calculator allowed by the regulations of the Joint Council for Qualifications. Calculators must not have the facility for symbolic algebra manipulation, differentiation and integration, or have retrievable mathematical formulae stored in them.**

### Instructions

- Use **black** ink or ball-point pen.
- If pencil is used for diagrams/sketches/graphs it must be dark (HB or B). Coloured pencils and highlighter pens must not be used.
- **Fill in the boxes** at the top of this page with your name, centre number and candidate number.
- Answer **all** questions and ensure that your answers to parts of questions are clearly labelled.
- Answer the questions in the spaces provided  
– *there may be more space than you need.*
- You should show sufficient working to make your methods clear. Answers without working may not gain full credit.
- When a calculator is used, the answer should be given to an appropriate degree of accuracy.

### Information

- The total mark for this paper is 75.
- The marks for **each** question are shown in brackets  
– *use this as a guide as to how much time to spend on each question.*

### Advice

- Read each question carefully before you start to answer it.
- Try to answer every question.
- Check your answers if you have time at the end.

Turn over ►

P46718A

©2016 Pearson Education Ltd.

1/1/1/1/1/



**PEARSON**





Leave blank

2.

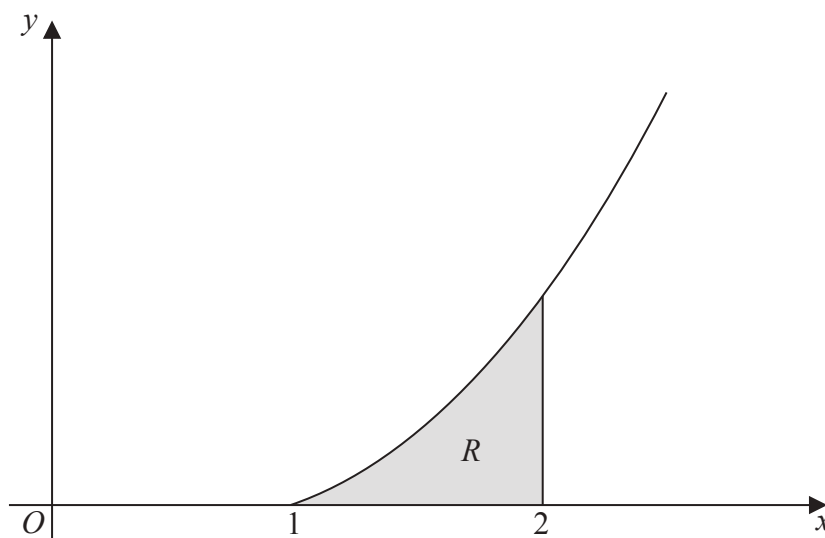


Figure 1

Figure 1 shows a sketch of part of the curve with equation  $y = x^2 \ln x$ ,  $x \geq 1$

The finite region  $R$ , shown shaded in Figure 1, is bounded by the curve, the  $x$ -axis and the line  $x = 2$

The table below shows corresponding values of  $x$  and  $y$  for  $y = x^2 \ln x$

$x$	1	1.2	1.4	1.6	1.8	2
$y$	0	0.2625		1.2032	1.9044	2.7726

- (a) Complete the table above, giving the missing value of  $y$  to 4 decimal places. (1)
- (b) Use the trapezium rule with all the values of  $y$  in the completed table to obtain an estimate for the area of  $R$ , giving your answer to 3 decimal places. (3)
- (c) Use integration to find the exact value for the area of  $R$ . (5)

---

---

---

---

---

---

---

---

---

---

DO NOT WRITE IN THIS AREA

DO NOT WRITE IN THIS AREA

DO NOT WRITE IN THIS AREA



















Leave blank

- 4. The rate of decay of the mass of a particular substance is modelled by the differential equation

$$\frac{dx}{dt} = -\frac{5}{2}x, \quad t \geq 0$$

where  $x$  is the mass of the substance measured in grams and  $t$  is the time measured in days.

Given that  $x = 60$  when  $t = 0$ ,

- (a) solve the differential equation, giving  $x$  in terms of  $t$ . You should show all steps in your working and give your answer in its simplest form. (4)

- (b) Find the time taken for the mass of the substance to decay from 60 grams to 20 grams. Give your answer to the nearest minute. (3)

---

---

---

---

---

---

---

---

---

---

---

---

---

---

---

---

---

---

---

---

---

---

---

---

---

---

---

---

---

---

DO NOT WRITE IN THIS AREA

DO NOT WRITE IN THIS AREA

DO NOT WRITE IN THIS AREA













Leave  
blank

Question 5 continued

Lined area for writing the answer to Question 5.

DO NOT WRITE IN THIS AREA

DO NOT WRITE IN THIS AREA

DO NOT WRITE IN THIS AREA





Leave blank

Question 5 continued

DO NOT WRITE IN THIS AREA

DO NOT WRITE IN THIS AREA

DO NOT WRITE IN THIS AREA

Handwriting practice area consisting of multiple horizontal lines.

Q5

(Total 6 marks)



Leave blank

6. (i) Given that  $y > 0$ , find

∫ (3y - 4) / (y(3y + 2)) dy (6)

(ii) (a) Use the substitution  $x = 4\sin^2\theta$  to show that

∫\_0^3 sqrt(x/(4-x)) dx = λ ∫\_0^(π/3) sin^2θ dθ (5)

where λ is a constant to be determined.

(b) Hence use integration to find

∫\_0^3 sqrt(x/(4-x)) dx (4)

giving your answer in the form aπ + b, where a and b are exact constants.

Horizontal lines for writing the answer to part (b).

DO NOT WRITE IN THIS AREA (vertical text on the right margin)



DO NOT WRITE IN THIS AREA

Leave blank

Question 6 continued

Lined writing area for the answer to Question 6.



P 4 6 7 1 8 A 0 2 1 3 2



DO NOT WRITE IN THIS AREA

DO NOT WRITE IN THIS AREA

DO NOT WRITE IN THIS AREA

Leave blank

Question 6 continued

Lined writing area for Question 6

(Total 15 marks)

Q6



Leave blank

7. (a) Find

$$\int (2x - 1)^{\frac{3}{2}} dx$$

giving your answer in its simplest form.

(2)

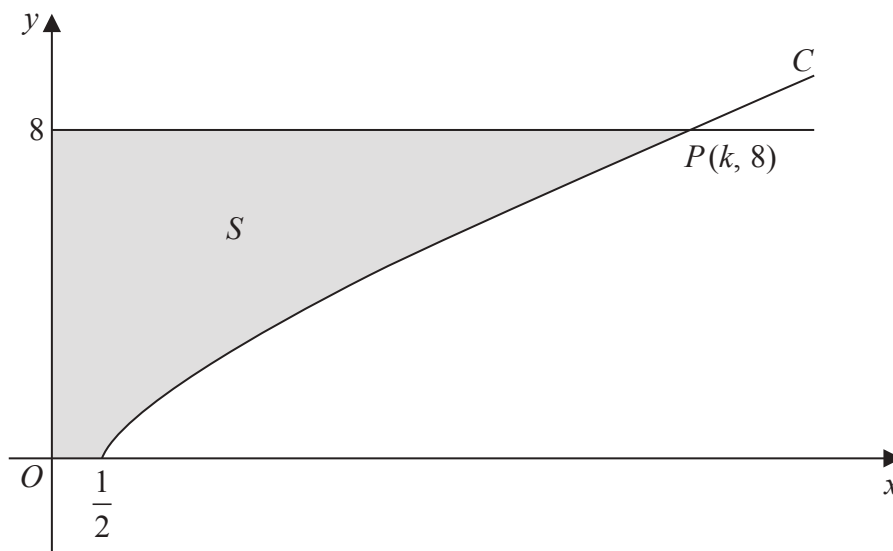


Figure 3

Figure 3 shows a sketch of part of the curve  $C$  with equation

$$y = (2x - 1)^{\frac{3}{4}}, \quad x \geq \frac{1}{2}$$

The curve  $C$  cuts the line  $y = 8$  at the point  $P$  with coordinates  $(k, 8)$ , where  $k$  is a constant.

(b) Find the value of  $k$ .

(2)

The finite region  $S$ , shown shaded in Figure 3, is bounded by the curve  $C$ , the  $x$ -axis, the  $y$ -axis and the line  $y = 8$ . This region is rotated through  $2\pi$  radians about the  $x$ -axis to form a solid of revolution.

(c) Find the exact value of the volume of the solid generated.

(4)

---

---

---

---

---

---

---

---

---

---

DO NOT WRITE IN THIS AREA

DO NOT WRITE IN THIS AREA

DO NOT WRITE IN THIS AREA











Leave blank

8. With respect to a fixed origin  $O$ , the line  $l_1$  is given by the equation

$$\mathbf{r} = \begin{pmatrix} 8 \\ 1 \\ -3 \end{pmatrix} + \mu \begin{pmatrix} -5 \\ 4 \\ 3 \end{pmatrix}$$

where  $\mu$  is a scalar parameter.

The point  $A$  lies on  $l_1$  where  $\mu = 1$

(a) Find the coordinates of  $A$ .

(1)

The point  $P$  has position vector  $\begin{pmatrix} 1 \\ 5 \\ 2 \end{pmatrix}$ .

The line  $l_2$  passes through the point  $P$  and is parallel to the line  $l_1$

(b) Write down a vector equation for the line  $l_2$

(2)

(c) Find the exact value of the distance  $AP$ .

Give your answer in the form  $k\sqrt{2}$ , where  $k$  is a constant to be determined.

(2)

The acute angle between  $AP$  and  $l_2$  is  $\theta$ .

(d) Find the value of  $\cos\theta$

(3)

A point  $E$  lies on the line  $l_2$   
Given that  $AP = PE$ ,

(e) find the area of triangle  $APE$ ,

(2)

(f) find the coordinates of the two possible positions of  $E$ .

(5)

---

---

---

---

---

---

---

---

---

---

DO NOT WRITE IN THIS AREA

DO NOT WRITE IN THIS AREA

DO NOT WRITE IN THIS AREA







Leave blank

**Question 8 continued**

A large rectangular area containing 30 horizontal lines for writing answers.

DO NOT WRITE IN THIS AREA

DO NOT WRITE IN THIS AREA

DO NOT WRITE IN THIS AREA



