

Write your name here

Surname	Other names
---------	-------------

Pearson Edexcel
International
Advanced Level

Centre Number

--	--	--	--	--

Candidate Number

--	--	--	--

Core Mathematics C12

Advanced Subsidiary

Tuesday 9 January 2018 – Morning
Time: 2 hours 30 minutes

Paper Reference
WMA01/01

You must have:
Mathematical Formulae and Statistical Tables (Blue)

Total Marks

Candidates may use any calculator allowed by the regulations of the Joint Council for Qualifications. Calculators must not have the facility for symbolic algebra manipulation, differentiation and integration, or have retrievable mathematical formulae stored in them.

Instructions

- Use **black** ink or ball-point pen.
- If pencil is used for diagrams/sketches/graphs it must be dark (HB or B). Coloured pencils and highlighter pens must not be used.
- **Fill in the boxes** at the top of this page with your name, centre number and candidate number.
- Answer **all** questions and ensure that your answers to parts of questions are clearly labelled.
- Answer the questions in the spaces provided – *there may be more space than you need.*
- You should show sufficient working to make your methods clear. Answers without working may not gain full credit.
- When a calculator is used, the answer should be given to an appropriate degree of accuracy.

Information

- The total mark for this paper is 125.
- The marks for **each** question are shown in brackets – *use this as a guide as to how much time to spend on each question.*

Advice

- Read each question carefully before you start to answer it.
- Try to answer every question.
- Check your answers if you have time at the end.

Turn over ►

P50713A

©2018 Pearson Education Ltd.

1/1/1/1/1/



Leave blank

1. Given that

$$y = \frac{2x^{\frac{2}{3}} + 3}{6}, \quad x > 0$$

find, in the simplest form,

(a) $\frac{dy}{dx}$ (2)

(b) $\int y dx$ (3)

DO NOT WRITE IN THIS AREA

DO NOT WRITE IN THIS AREA

DO NOT WRITE IN THIS AREA



Leave
blank

Question 1 continued

Lined area for writing the answer to Question 1.

Q1

(Total 5 marks)

DO NOT WRITE IN THIS AREA



Leave blank

2. A sequence is defined by

$$u_1 = 1$$

$$u_{n+1} = 2 - 3u_n \quad n \geq 1$$

(a) Find the value of u_2 and the value of u_3 (2)

(b) Calculate the value of $\sum_{r=1}^4 (r - u_r)$ (3)

DO NOT WRITE IN THIS AREA

DO NOT WRITE IN THIS AREA

DO NOT WRITE IN THIS AREA



DO NOT WRITE IN THIS AREA

Leave blank

Question 2 continued

[Lined writing area]

(Total 5 marks)

Q2



Leave
blank

Question 3 continued

DO NOT WRITE IN THIS AREA

Q3

(Total 4 marks)



Leave blank

4. The equation

$$(p - 2)x^2 + 8x + (p + 4) = 0, \text{ where } p \text{ is a constant}$$

has no real roots.

(a) Show that p satisfies $p^2 + 2p - 24 > 0$ (3)

(b) Hence find the set of possible values of p . (4)

DO NOT WRITE IN THIS AREA



Leave blank

Question 5 continued

Blank writing area with horizontal lines for the answer to Question 5.

DO NOT WRITE IN THIS AREA



Leave blank

6.

f(x) = ax^3 - 8x^2 + bx + 6

where a and b are constants.

When f(x) is divided by (x + 1) there is no remainder.

When f(x) is divided by (x - 2) the remainder is -12

(a) Find the value of a and the value of b. (5)

(b) Factorise f(x) completely. (4)

Handwritten area with horizontal lines for student answers.

DO NOT WRITE IN THIS AREA

DO NOT WRITE IN THIS AREA

DO NOT WRITE IN THIS AREA



Leave blank

Question 6 continued

Lined area for writing the answer to Question 6.

DO NOT WRITE IN THIS AREA



7.

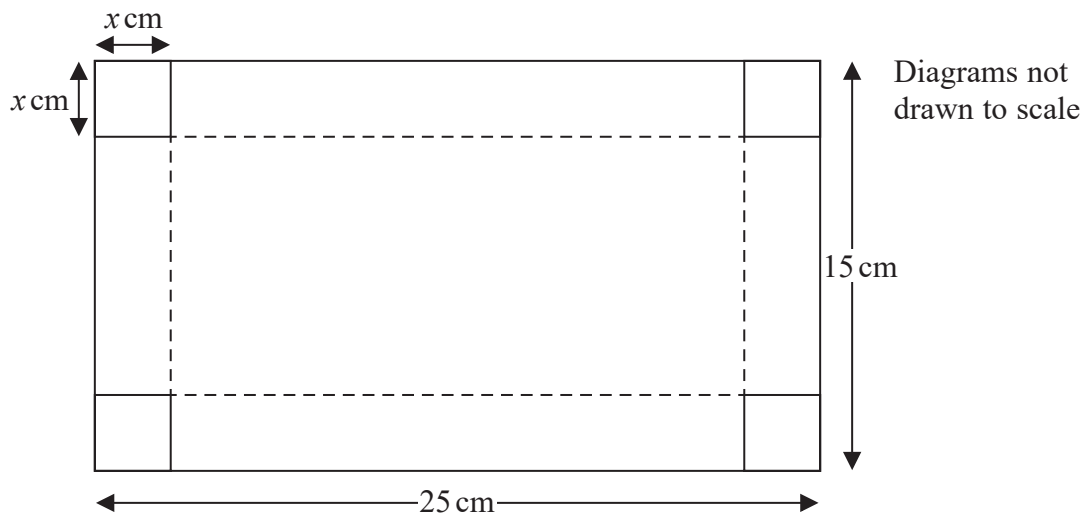


Figure 1

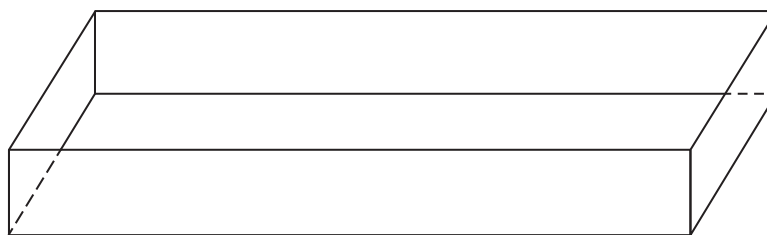


Figure 2

Figure 1 shows a rectangular sheet of metal of negligible thickness, which measures 25 cm by 15 cm. Squares of side x cm are cut from each corner of the sheet and the remainder is folded along the dotted lines to make an open cuboid box, as shown in Figure 2.

(a) Show that the volume, V cm³, of the box is given by

$$V = 4x^3 - 80x^2 + 375x \tag{2}$$

(b) Use calculus to find the value of x , to 3 significant figures, for which the volume of the box is a maximum. (4)

(c) Justify that this value of x gives a maximum value for V . (2)

(d) Find, to 3 significant figures, the maximum volume of the box. (2)



DO NOT WRITE IN THIS AREA

8.

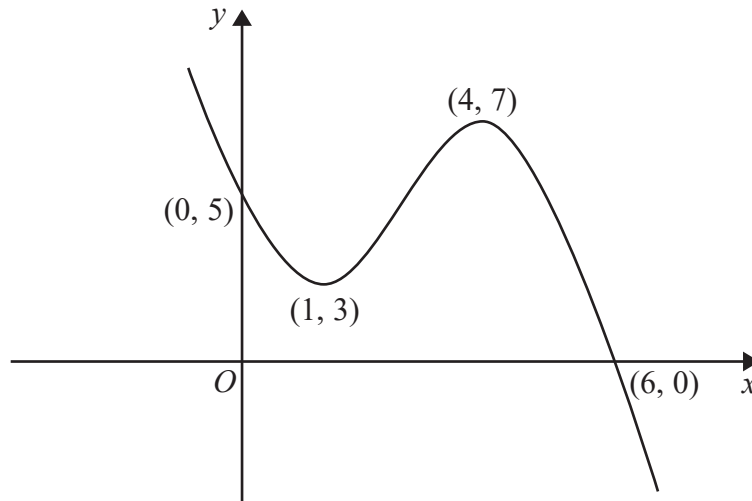


Figure 3

Figure 3 shows a sketch of the curve with equation $y = f(x)$, $x \in \mathbb{R}$.

The curve crosses the y -axis at the point $(0, 5)$ and crosses the x -axis at the point $(6, 0)$.

The curve has a minimum point at $(1, 3)$ and a maximum point at $(4, 7)$.

On separate diagrams, sketch the curve with equation

(a) $y = f(-x)$

(3)

(b) $y = f(2x)$

(3)

On each diagram, show clearly the coordinates of any points of intersection of the curve with the two coordinate axes and the coordinates of the stationary points.



Leave
blank

Question 8 continued

DO NOT WRITE IN THIS AREA



P 5 0 7 1 3 A 0 2 3 5 2

Leave
blank

Question 8 continued

DO NOT WRITE IN THIS AREA

DO NOT WRITE IN THIS AREA

DO NOT WRITE IN THIS AREA



Leave
blank

Question 8 continued

DO NOT WRITE IN THIS AREA

(Total 6 marks)

Q8



P 5 0 7 1 3 A 0 2 5 5 2

Leave blank

9. The first term of a geometric series is 20 and the common ratio is 0.9

(a) Find the value of the fifth term. (2)

(b) Find the sum of the first 8 terms, giving your answer to one decimal place. (2)

Given that $S_\infty - S_N < 0.04$, where S_N is the sum of the first N terms of this series,

(c) show that $0.9^N < 0.0002$ (4)

(d) Hence find the smallest possible value of N . (2)

Horizontal lines for writing answers.

DO NOT WRITE IN THIS AREA



Leave
blank

Question 9 continued

A series of horizontal lines for writing the answer to Question 9.

DO NOT WRITE IN THIS AREA



P 5 0 7 1 3 A 0 2 7 5 2

Leave
blank

Question 9 continued

A series of horizontal lines for writing the answer to Question 9.

DO NOT WRITE IN THIS AREA

DO NOT WRITE IN THIS AREA

DO NOT WRITE IN THIS AREA



Leave blank

11. The circle C has equation

$$x^2 + y^2 - 8x - 10y + 16 = 0$$

The centre of C is at the point T .

(a) Find

- (i) the coordinates of the point T ,
- (ii) the radius of the circle C .

(4)

The point M has coordinates $(20, 12)$.

(b) Find the exact length of the line MT .

(2)

Point P lies on the circle C such that the tangent at P passes through the point M .

(c) Find the exact area of triangle MTP , giving your answer as a simplified surd.

(3)

DO NOT WRITE IN THIS AREA

DO NOT WRITE IN THIS AREA

DO NOT WRITE IN THIS AREA



Leave
blank

Question 11 continued

Ruled area for student response with horizontal lines.

DO NOT WRITE IN THIS AREA

DO NOT WRITE IN THIS AREA

DO NOT WRITE IN THIS AREA



13.

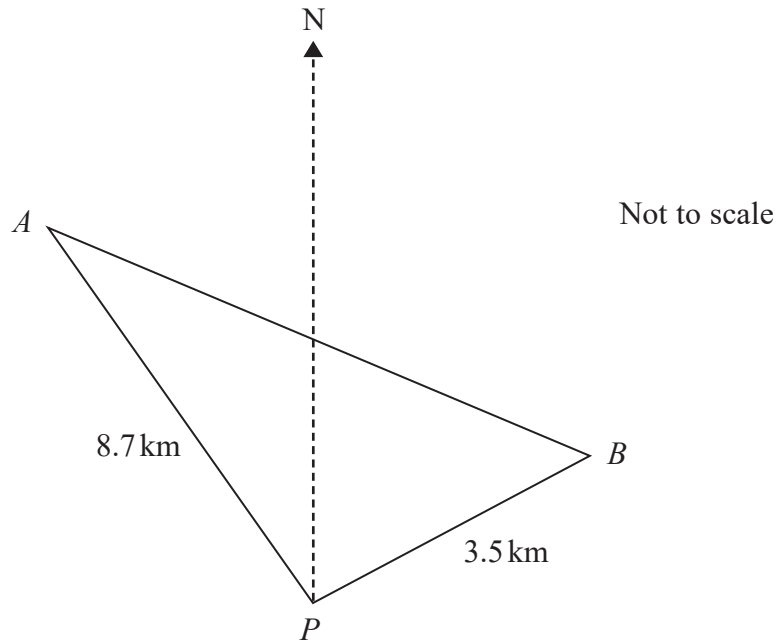


Figure 4

Figure 4 shows the position of two stationary boats, A and B , and a port P which are assumed to be in the same horizontal plane.

Boat A is 8.7 km on a bearing of 314° from port P .

Boat B is 3.5 km on a bearing of 052° from port P .

- (a) Show that angle APB is 98° (1)
- (b) Find the distance of boat B from boat A , giving your answer to one decimal place. (2)
- (c) Find the bearing of boat B from boat A , giving your answer to the nearest degree. (4)



DO NOT WRITE IN THIS AREA

Leave
blank

Question 13 continued

DO NOT WRITE IN THIS AREA

Lined area for writing the answer to Question 13.

(Total 7 marks)

Q13



14.

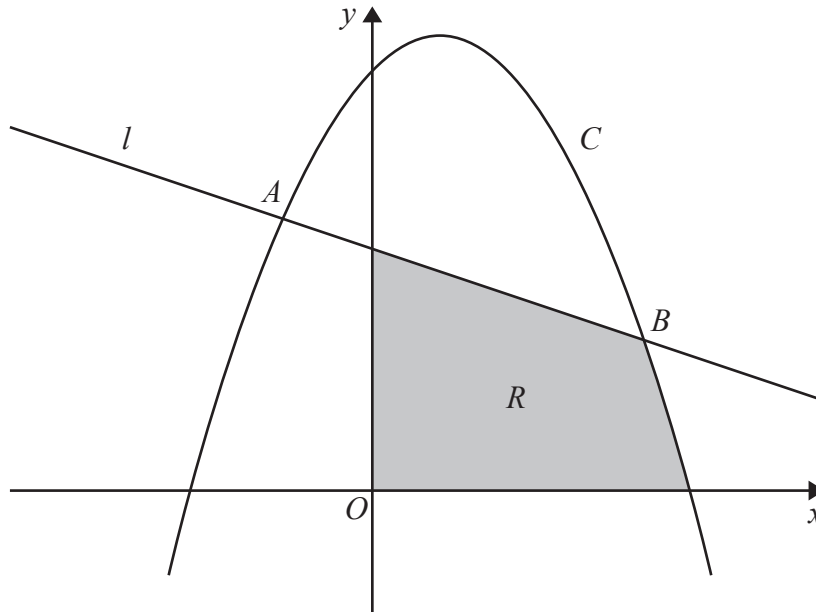


Figure 5

Figure 5 shows a sketch of part of the line l with equation $y = 8 - x$ and part of the curve C with equation $y = 14 + 3x - 2x^2$

The line l and the curve C intersect at the point A and the point B as shown.

(a) Use algebra to find the coordinates of A and the coordinates of B .

(5)

The region R , shown shaded in Figure 5, is bounded by the coordinate axes, the line l , and the curve C .

(b) Use algebraic integration to calculate the exact area of R .

(8)



DO NOT WRITE IN THIS AREA

DO NOT WRITE IN THIS AREA

DO NOT WRITE IN THIS AREA

Leave
blank

Question 14 continued

DO NOT WRITE IN THIS AREA

Horizontal lines for writing answers.



Leave
blank

Question 14 continued

Q14

(Total 13 marks)

DO NOT WRITE IN THIS AREA



P 5 0 7 1 3 A 0 4 9 5 2

Leave blank

15. The binomial expansion, in ascending powers of x , of $(1 + kx)^n$ is

$$1 + 36x + 126kx^2 + \dots$$

where k is a non-zero constant and n is a positive integer.

(a) Show that $nk(n - 1) = 252$ (2)

(b) Find the value of k and the value of n . (5)

(c) Using the values of k and n , find the coefficient of x^3 in the binomial expansion of $(1 + kx)^n$ (3)

DO NOT WRITE IN THIS AREA

DO NOT WRITE IN THIS AREA

DO NOT WRITE IN THIS AREA



Leave blank

Question 15 continued

Blank lined area for writing the answer to Question 15.

Q15

(Total 10 marks)

TOTAL FOR PAPER: 125 MARKS

END

DO NOT WRITE IN THIS AREA
DO NOT WRITE IN THIS AREA
DO NOT WRITE IN THIS AREA

